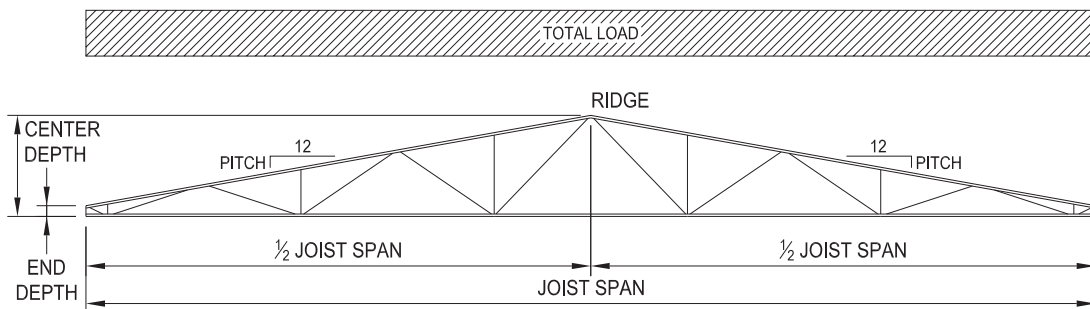


# GABLE JOIST (SPGB) TABLES

The following weight tables are representative of SP-Series joist designs for Gable Joists with parameters shown in the diagram below. The maximum allowable Live Load deflection is  $L/240$  for a Live Load equal to 75 percent of the Total Load listed in the table. The tables also give bridging requirements per Section 904.5(d), the required seat depth for the given profile, as well as the estimated self-weight in pounds per

linear foot. This catalog provides two design examples for reference and clarification on design issues. The following tables are not representative of any limits or constraints on design or constructability by NMBS. For further information, please contact your nearest NMBS representative or visit [www.newmill.com](http://www.newmill.com).

**ALL TABLES ARE BASED ON ASD**



## GABLE JOIST (SPGB)



# GABLE JOIST (SPGB) TABLES

Span ft	End Depth in	Center Depth in	Top Chord Pitch in/ft	Top Chord Uniform Load - Pounds per Linear Foot (plf) (ASD)										
				300	350	400	450	500	550	600	650	700	750	800
				Joist Self-Weight - Pounds per Linear Foot (plf)										
10	18.1	20	0.375	8	8	8	8	8	8	8	8	8	8	8
10	17.5	20	0.500	8	8	8	8	8	8	8	8	8	8	8
10	16.9	20	0.625	8	8	8	8	8	8	8	8	8	8	8
10	16.3	20	0.750	8	8	8	8	8	8	8	8	8	8	8
10	15.6	20	0.875	8	8	8	8	8	8	8	8	8	8	8
10	15.0	20	1.000	7	7	7	7	7	7	7	7	7	7	7
10	19.6	24	0.875	8	8	8	8	8	8	8	8	8	8	8
10	19.0	24	1.000	8	8	8	8	8	8	8	8	8	8	8
10	17.8	24	1.250	8	8	8	8	8	8	8	8	8	8	8
10	16.5	24	1.500	8	8	8	8	8	8	8	8	8	8	8
10	14.0	24	2.000	8	8	8	8	8	8	8	8	8	8	8
10	9.0	24	3.000	8	8	8	8	8	8	8	8	8	8	8
10	23.0	28	1.000	8	8	8	8	8	8	8	8	8	8	8
10	21.8	28	1.250	8	8	8	8	8	8	8	8	8	8	8
10	20.5	28	1.500	8	8	8	8	8	8	8	8	8	8	8
10	18.0	28	2.000	8	8	8	8	8	8	8	8	8	8	8
10	13.0	28	3.000	8	8	8	8	8	8	8	8	8	8	8
10	8.0	28	4.000	8	8	8	8	8	8	8	8	8	8	8
10	27.0	32	1.000	7	8	8	8	8	8	8	8	8	8	8
10	25.8	32	1.250	7	8	8	8	8	8	8	8	8	8	8
10	24.5	32	1.500	7	8	8	8	8	8	8	8	8	8	8
10	22.0	32	2.000	8	8	8	8	8	8	8	8	8	8	8
10	17.0	32	3.000	8	8	8	8	9	9	9	9	9	9	9
10	12.0	32	4.000	8	8	8	8	8	8	8	8	8	8	8
10	31.8	38	1.250	8	8	8	8	8	8	8	8	8	8	8
10	30.5	38	1.500	8	8	8	8	8	8	8	8	8	8	8
10	28.0	38	2.000	8	8	8	8	8	8	8	8	8	8	8
10	23.0	38	3.000	8	8	8	8	8	8	8	8	8	8	8
10	18.0	38	4.000	9	9	9	9	9	9	9	9	9	9	9
10	8.0	38	6.000	9	9	9	9	9	9	9	9	9	9	9
10	37.8	44	1.250	8	8	8	8	8	8	8	9	9	9	9
10	36.5	44	1.500	8	8	8	8	8	8	8	9	9	9	9
10	34.0	44	2.000	8	8	8	8	8	8	8	9	9	9	9
10	29.0	44	3.000	8	8	8	8	8	8	8	8	8	8	8
10	24.0	44	4.000	8	8	8	8	8	8	8	8	8	8	8
10	14.0	44	6.000	9	9	9	9	9	9	9	9	9	9	9
10	43.8	50	1.250	8	8	8	8	8	8	9	9	9	9	9
10	42.5	50	1.500	8	8	8	8	8	8	9	9	9	9	9
10	40.0	50	2.000	8	8	8	8	8	8	9	9	9	9	9
10	35.0	50	3.000	8	8	8	8	8	8	9	9	9	9	9
10	30.0	50	4.000	8	8	8	8	8	8	9	9	9	9	9
10	20.0	50	6.000	9	9	9	9	9	9	9	9	9	9	9
10	51.8	58	1.250	9	9	9	9	9	9	9	9	10	10	10
10	50.5	58	1.500	9	9	9	9	9	9	9	9	10	10	10
10	48.0	58	2.000	9	9	9	9	9	9	9	9	10	10	10
10	43.0	58	3.000	9	9	9	9	9	9	9	9	9	10	10
10	38.0	58	4.000	9	9	9	9	9	9	9	9	9	10	10
10	28.0	58	6.000	9	9	9	9	9	9	9	10	10	10	10
10	59.8	66	1.250	10	10	10	10	10	10	11	11	11	11	11
10	58.5	66	1.500	10	10	10	10	10	10	10	10	11	11	11
10	56.0	66	2.000	10	10	10	10	10	10	10	10	11	11	11
10	51.0	66	3.000	10	10	10	10	10	10	10	10	11	11	11
10	46.0	66	4.000	10	10	10	10	10	10	10	11	11	11	11
10	36.0	66	6.000	10	10	10	10	10	10	10	10	11	11	11
10	69.8	76	1.250	12	12	12	12	12	12	13	13	13	13	13
10	68.5	76	1.500	12	12	12	12	12	12	12	12	13	13	13
10	66.0	76	2.000	12	12	12	12	12	12	12	12	13	13	13
10	61.0	76	3.000	11	11	11	11	11	11	12	12	12	12	13
10	56.0	76	4.000	11	11	11	11	11	11	11	12	12	12	12
10	46.0	76	6.000	11	11	11	11	11	11	11	11	12	12	12

**X - Bridging Requirements** - Reference SP-Series Specification **Section 904.5 BRIDGING** on page 92

1 row	2 rows	3 rows	4 rows	5 rows	6 rows	7 rows	8 rows	9 rows	10 rows
-------	--------	--------	--------	--------	--------	--------	--------	--------	---------

**Bearing Seat Depth** - Profiles to the right of a colored line have a seat depth as indicated in the chart below

Minimum 5"	7½"	10"	Maximum 12½"
------------	-----	-----	--------------

# GABLE JOIST (SPGB) TABLES

Span ft	End Depth in	Center Depth in	Top Chord Pitch in/ft	Top Chord Uniform Load - Pounds per Linear Foot (plf) (ASD)										
				300	350	400	450	500	550	600	650	700	750	800
				Joist Self-Weight - Pounds per Linear Foot (plf)										
20	17.5	20	0.250	7	7	7	7	7	8	8	8	9	10	10
20	16.3	20	0.375	7	7	7	7	7	8	8	9	9	10	10
20	15.0	20	0.500	7	7	7	7	7	8	8	9	9	10	10
20	13.8	20	0.625	7	7	7	7	7	8	8	9	9	10	10
20	12.5	20	0.750	7	7	7	7	7	8	8	9	9	10	10
20	11.3	20	0.875	7	7	7	7	7	8	8	9	9	10	10
20	17.8	24	0.625	7	7	7	7	7	8	8	8	9	10	10
20	16.5	24	0.750	7	7	7	7	7	8	8	9	9	10	10
20	15.3	24	0.875	7	7	7	7	7	8	8	9	9	9	10
20	14.0	24	1.000	7	7	7	7	7	7	8	8	9	9	10
20	11.5	24	1.250	7	7	7	7	7	8	8	9	9	10	10
20	9.0	24	1.500	7	7	7	7	7	8	8	9	9	10	10
20	22.5	30	0.750	7	7	7	8	8	8	8	9	9	9	10
20	21.3	30	0.875	7	7	7	8	8	8	8	9	9	10	10
20	20.0	30	1.000	7	7	7	7	8	8	8	8	9	10	10
20	17.5	30	1.250	7	7	7	7	7	8	8	8	9	10	10
20	15.0	30	1.500	7	7	7	7	7	8	8	8	9	9	10
20	10.0	30	2.000	7	7	7	7	7	7	8	8	9	9	9
20	27.3	36	0.875	7	7	7	7	8	8	8	9	9	10	10
20	26.0	36	1.000	7	7	7	7	8	8	8	9	9	10	10
20	23.5	36	1.250	7	7	7	8	8	8	8	9	9	10	10
20	21.0	36	1.500	7	7	7	8	8	8	8	9	9	10	10
20	16.0	36	2.000	7	7	8	8	8	8	8	9	9	10	10
20	6.0	36	3.000	7	7	8	8	8	8	8	9	9	10	10
20	33.3	42	0.875	7	8	8	8	8	8	8	9	9	10	10
20	32.0	42	1.000	7	8	8	8	8	8	8	9	9	10	10
20	29.5	42	1.250	7	8	8	8	8	8	8	9	9	10	10
20	27.0	42	1.500	8	8	8	8	8	8	8	9	9	10	10
20	22.0	42	2.000	8	8	8	8	8	8	8	9	9	10	10
20	12.0	42	3.000	7	7	7	7	8	8	8	8	9	9	10
20	40.0	50	1.000	8	8	8	8	9	9	9	10	10	10	11
20	37.5	50	1.250	8	8	8	8	9	9	9	10	10	10	11
20	35.0	50	1.500	8	8	8	8	8	9	9	9	10	10	11
20	30.0	50	2.000	8	8	8	8	8	8	9	9	9	10	11
20	20.0	50	3.000	8	8	8	8	9	9	9	9	10	10	10
20	10.0	50	4.000	7	8	8	8	8	8	8	8	9	10	10
20	48.0	58	1.000	9	9	9	10	10	10	10	11	11	12	13
20	45.5	58	1.250	9	9	9	10	10	10	10	11	11	12	12
20	43.0	58	1.500	9	9	9	9	10	10	10	10	11	11	12
20	38.0	58	2.000	8	8	8	9	9	10	10	10	11	11	12
20	28.0	58	3.000	8	9	9	9	9	9	9	9	9	10	11
20	18.0	58	4.000	8	8	8	9	9	9	9	9	10	10	11
20	55.5	68	1.250	9	10	10	11	11	11	12	14	14	15	15
20	53.0	68	1.500	9	10	10	11	11	11	12	12	13	14	15
20	48.0	68	2.000	9	9	10	10	10	11	11	12	12	13	14
20	38.0	68	3.000	9	9	9	9	10	10	10	11	11	11	12
20	28.0	68	4.000	9	9	9	9	9	9	9	9	10	11	11
20	8.0	68	6.000	8	9	9	9	9	9	9	10	10	11	11
20	65.5	78	1.250	11	12	12	13	13	14	15	15	17	17	17
20	63.0	78	1.500	11	12	12	13	13	14	15	15	16	17	17
20	58.0	78	2.000	11	11	12	12	12	13	14	15	16	16	17
20	48.0	78	3.000	10	10	11	11	11	12	12	13	14	15	15
20	38.0	78	4.000	10	10	10	10	11	11	11	11	11	12	13
20	18.0	78	6.000	10	10	10	11	11	11	11	11	11	12	12
20	77.5	90	1.250	16	16	17	19	19	20	20	20	20	21	21
20	75.0	90	1.500	15	16	17	19	19	19	19	20	20	20	20
20	70.0	90	2.000	14	14	16	17	18	18	18	19	19	20	20
20	60.0	90	3.000	12	13	13	13	14	15	15	16	17	17	18
20	50.0	90	4.000	11	11	12	12	12	13	13	14	15	15	16
20	30.0	90	6.000	11	11	11	11	11	12	12	12	13	13	13

**X - Bridging Requirements** - Reference SP-Series Specification **Section 904.5 BRIDGING** on page 92

1 row	2 rows	3 rows	4 rows	5 rows	6 rows	7 rows	8 rows	9 rows	10 rows
-------	--------	--------	--------	--------	--------	--------	--------	--------	---------

**Bearing Seat Depth** - Profiles to the right of a colored line have a seat depth as indicated in the chart below

Minimum 5"	7½"	10"	Maximum 12½"
------------	-----	-----	--------------

# GABLE JOIST (SPGB) TABLES

Span ft	End Depth in	Center Depth in	Top Chord Pitch in/ft	Top Chord Uniform Load - Pounds per Linear Foot (plf) (ASD)											
				300	350	400	450	500	550	600	650	700	750	800	
				Joist Self-Weight - Pounds per Linear Foot (plf)											
30	16.3	20	0.250	8	9	10	11	13	14	15	16	16	18	20	
30	14.4	20	0.375	8	9	10	12	13	14	15	16	17	18	20	
30	12.5	20	0.500	8	9	11	12	13	14	16	16	17	18	20	
30	10.6	20	0.625	8	9	11	12	13	15	16	17	18	20	20	
30	8.8	20	0.750	9	10	11	13	14	15	16	18	19	20	20	
30	6.9	20	0.875	9	10	12	13	14	16	17	17	20	21	21	
30	18.5	26	0.500	7	8	8	10	10	11	12	13	14	15	16	
30	16.6	26	0.625	7	8	8	9	10	10	11	12	13	14	15	16
30	14.8	26	0.750	7	8	9	10	10	11	12	13	14	15	16	
30	12.9	26	0.875	7	8	9	10	10	11	13	13	14	15	16	
30	11.0	26	1.000	7	8	9	10	11	12	13	14	15	16	17	
30	7.3	26	1.250	8	9	10	10	12	13	14	15	16	17	18	
30	22.6	32	0.625	7	7	8	9	10	10	11	12	13	13	14	
30	20.8	32	0.750	7	8	8	9	10	10	11	12	13	13	14	
30	18.9	32	0.875	7	8	8	9	10	10	11	12	13	14	14	
30	17.0	32	1.000	7	7	8	9	10	11	11	12	13	13	14	
30	13.3	32	1.250	7	7	8	9	10	11	11	12	13	14	14	
30	9.5	32	1.500	7	8	8	9	10	10	11	12	14	14	15	
30	28.8	40	0.750	7	8	8	9	10	10	11	12	13	13	14	
30	26.9	40	0.875	7	8	8	9	10	11	11	12	13	13	13	
30	25.0	40	1.000	7	8	8	9	10	11	11	12	13	13	13	
30	21.3	40	1.250	8	8	8	9	10	11	11	12	13	13	13	
30	17.5	40	1.500	7	8	8	9	10	11	11	12	13	13	13	
30	10.0	40	2.000	7	8	8	9	10	10	11	12	12	13	14	
30	36.8	48	0.750	8	8	9	9	10	11	12	13	14	14	14	
30	34.9	48	0.875	8	8	9	9	10	11	12	13	13	14	14	
30	33.0	48	1.000	8	8	9	9	10	11	12	12	13	14	14	
30	29.3	48	1.250	8	8	9	9	10	11	11	12	13	14	14	
30	25.5	48	1.500	8	8	8	9	10	11	11	12	13	14	14	
30	18.0	48	2.000	7	8	8	9	10	10	11	12	13	13	14	
30	44.9	58	0.875	9	9	10	10	11	12	12	13	13	14	15	
30	43.0	58	1.000	9	9	9	10	11	12	12	12	13	14	14	
30	39.3	58	1.250	9	9	9	10	11	11	12	13	13	14	15	
30	35.5	58	1.500	8	9	9	10	11	11	12	12	13	15	15	
30	28.0	58	2.000	8	8	8	9	10	11	11	12	13	14	14	
30	13.0	58	3.000	8	8	8	9	10	10	11	12	12	13	14	
30	53.0	68	1.000	10	11	11	11	13	13	14	16	16	18	18	
30	49.3	68	1.250	10	10	11	11	12	13	13	15	16	16	18	
30	45.5	68	1.500	9	10	10	11	11	12	13	13	14	14	15	
30	38.0	68	2.000	9	9	9	10	11	12	13	13	13	14	15	
30	23.0	68	3.000	9	9	9	10	10	11	12	12	13	14	15	
30	8.0	68	4.000	8	8	9	10	10	11	12	12	13	14	14	
30	65.0	80	1.000	12	13	14	15	15	16	18	18	18	19	20	
30	61.3	80	1.250	12	13	13	14	15	16	17	17	18	18	19	
30	57.5	80	1.500	12	12	12	13	14	15	16	16	18	18	19	
30	50.0	80	2.000	11	11	12	12	13	14	15	16	16	17	17	
30	35.0	80	3.000	10	10	11	11	12	13	14	15	15	16	16	
30	20.0	80	4.000	9	9	10	10	11	12	13	14	15	15	15	
30	77.0	92	1.000	15	17	17	18	18	19	20	21	21	21	22	
30	73.3	92	1.250	14	15	16	17	19	19	20	20	20	21	22	
30	69.5	92	1.500	14	14	15	16	17	18	19	19	20	21	21	
30	62.0	92	2.000	12	13	13	14	15	17	17	18	19	19	19	
30	47.0	92	3.000	11	12	12	13	13	13	14	15	16	17	18	
30	32.0	92	4.000	11	11	11	12	13	14	14	15	16	17	17	
30	87.3	106	1.250	19	20	21	21	21	22	24	24	24	25	25	
30	83.5	106	1.500	18	19	20	20	21	22	23	23	23	23	25	
30	76.0	106	2.000	16	17	19	19	19	20	21	22	22	23	23	
30	61.0	106	3.000	14	15	15	16	17	18	19	20	20	20	21	
30	46.0	106	4.000	14	15	15	15	15	15	17	18	19	19	19	
30	16.0	106	6.000	11	12	12	13	13	14	14	16	16	17	18	

**X - Bridging Requirements** - Reference SP-Series Specification **Section 904.5 BRIDGING** on page 92

1 row	2 rows	3 rows	4 rows	5 rows	6 rows	7 rows	8 rows	9 rows	10 rows
-------	--------	--------	--------	--------	--------	--------	--------	--------	---------

**Bearing Seat Depth** - Profiles to the right of a colored line have a seat depth as indicated in the chart below

Minimum 5"	7½"	10"	Maximum 12½"
------------	-----	-----	--------------

# GABLE JOIST (SPGB) TABLES

Span ft	End Depth in	Center Depth in	Top Chord Pitch in/ft	Top Chord Uniform Load - Pounds per Linear Foot (plf) (ASD)										
				300	350	400	450	500	550	600	650	700	750	800
				Joist Self-Weight - Pounds per Linear Foot (plf)										
40	19.0	24	0.250	11	13	14	16	17	20	21	23	25	26	28
40	16.5	24	0.375	11	13	14	16	18	19	21	23	25	27	27
40	14.0	24	0.500	12	14	15	16	18	20	21	25	25	28	29
40	11.5	24	0.625	12	14	16	17	19	20	22	25	28	28	29
40	9.0	24	0.750	13	15	16	17	20	21	25	25	28	29	31
40	6.5	24	0.875	13	16	17	20	21	24	25	28	29	31	34
40	20.0	30	0.500	9	11	12	13	15	17	18	18	20	21	22
40	17.5	30	0.625	10	11	13	14	15	17	18	19	20	22	23
40	15.0	30	0.750	10	11	13	14	16	16	18	20	21	22	24
40	12.5	30	0.875	10	11	13	15	16	18	18	20	21	23	25
40	10.0	30	1.000	10	12	13	15	17	18	20	20	22	25	26
40	5.0	30	1.250	12	13	16	17	19	20	22	26	26	28	29
40	25.5	38	0.625	9	10	11	12	13	14	15	16	17	19	19
40	23.0	38	0.750	9	10	11	12	13	14	15	16	17	19	19
40	20.5	38	0.875	9	10	11	12	13	14	15	16	17	19	19
40	18.0	38	1.000	9	10	11	12	14	14	15	17	17	19	19
40	13.0	38	1.250	9	10	11	12	14	15	16	17	18	19	20
40	8.0	38	1.500	9	10	12	13	15	16	17	19	20	20	22
40	31.0	46	0.750	8	10	10	12	13	14	14	15	16	17	18
40	28.5	46	0.875	8	10	11	12	13	14	14	15	16	17	18
40	26.0	46	1.000	8	9	10	12	13	13	14	15	16	17	18
40	21.0	46	1.250	9	10	10	11	13	14	14	15	16	17	18
40	16.0	46	1.500	9	9	10	12	12	14	14	16	16	18	18
40	6.0	46	2.000	8	10	10	12	14	14	15	17	18	19	21
40	41.0	56	0.750	9	11	12	12	13	14	15	15	16	16	18
40	38.5	56	0.875	9	10	11	12	13	14	15	15	16	17	18
40	36.0	56	1.000	9	10	11	12	13	14	14	15	16	17	18
40	31.0	56	1.250	9	10	11	12	13	14	14	15	15	17	17
40	26.0	56	1.500	9	9	11	12	13	14	14	15	16	17	18
40	16.0	56	2.000	8	9	10	11	13	14	15	15	16	17	17
40	48.5	66	0.875	10	11	12	13	14	15	15	16	16	17	18
40	46.0	66	1.000	10	11	12	13	14	15	15	15	17	17	18
40	41.0	66	1.250	10	11	12	13	14	15	15	16	16	17	18
40	36.0	66	1.500	9	11	12	13	14	15	15	16	16	17	17
40	26.0	66	2.000	9	10	11	12	14	14	15	16	16	17	17
40	6.0	66	3.000	9	10	11	11	12	13	14	15	16	17	18
40	60.5	78	0.875	12	13	14	15	16	17	18	19	19	20	21
40	58.0	78	1.000	12	12	14	14	15	17	18	18	19	19	20
40	53.0	78	1.250	11	11	13	14	14	16	16	18	18	19	20
40	48.0	78	1.500	11	12	13	14	15	16	16	17	17	18	19
40	38.0	78	2.000	10	12	13	13	14	16	16	16	17	18	18
40	18.0	78	3.000	9	10	12	13	13	14	15	16	16	17	17
40	70.0	90	1.000	15	16	17	19	20	20	21	22	23	23	25
40	65.0	90	1.250	14	15	16	17	18	19	20	21	21	22	23
40	60.0	90	1.500	13	14	15	15	16	17	19	19	20	20	21
40	50.0	90	2.000	12	12	13	14	15	15	16	18	18	19	19
40	30.0	90	3.000	10	12	12	14	14	15	16	17	17	18	18
40	10.0	90	4.000	10	11	12	13	14	16	16	17	18	18	19
40	84.0	104	1.000	18	20	21	21	23	24	25	25	25	26	28
40	79.0	104	1.250	17	18	19	20	21	22	23	24	24	25	25
40	74.0	104	1.500	17	18	20	20	20	22	23	23	24	24	26
40	64.0	104	2.000	15	16	17	18	20	20	21	22	22	23	24
40	44.0	104	3.000	13	13	14	14	15	17	17	19	20	20	21
40	24.0	104	4.000	12	13	13	15	15	17	18	18	19	19	21
40	100.0	120	1.000	25	25	26	27	28	29	29	30	32	33	33
40	95.0	120	1.250	24	25	25	27	27	27	28	29	30	30	32
40	90.0	120	1.500	22	23	23	24	25	26	26	27	28	30	30
40	80.0	120	2.000	20	21	21	22	23	24	25	26	26	26	27
40	60.0	120	3.000	17	18	19	20	21	22	23	23	25	25	25
40	40.0	120	4.000	16	16	17	18	18	21	21	21	23	23	24

**X - Bridging Requirements** - Reference SP-Series Specification **Section 904.5 BRIDGING** on page 92

1 row	2 rows	3 rows	4 rows	5 rows	6 rows	7 rows	8 rows	9 rows	10 rows
-------	--------	--------	--------	--------	--------	--------	--------	--------	---------

**Bearing Seat Depth** - Profiles to the right of a colored line have a seat depth as indicated in the chart below

Minimum 5"	7½"	10"	Maximum 12½"
------------	-----	-----	--------------

# GABLE JOIST (SPGB) TABLES

Span ft	End Depth in	Center Depth in	Top Chord Pitch in/ft	Top Chord Uniform Load - Pounds per Linear Foot (plf) (ASD)										
				300	350	400	450	500	550	600	650	700	750	800
				Joist Self-Weight - Pounds per Linear Foot (plf)										
50	21.8	28	0.250	14	16	18	21	24	25	28	29	32	33	36
50	18.6	28	0.375	15	17	20	21	25	26	29	31	32	36	38
50	15.5	28	0.500	15	17	20	22	25	28	29	30	33	36	37
50	12.4	28	0.625	15	18	20	23	25	28	29	32	36	37	39
50	9.3	28	0.750	16	19	21	25	28	29	32	36	38	40	41
50	6.1	28	0.875	17	21	24	28	29	32	37	38	42	51	51
50	26.6	36	0.375	12	13	16	17	19	20	22	25	26	28	29
50	23.5	36	0.500	12	14	16	17	19	20	22	25	26	28	29
50	20.4	36	0.625	12	14	16	18	19	21	22	25	26	28	30
50	17.3	36	0.750	13	14	16	18	20	21	23	26	28	29	31
50	14.1	36	0.875	13	15	17	18	20	21	25	26	28	29	31
50	11.0	36	1.000	13	16	18	19	21	23	25	28	29	31	32
50	28.4	44	0.625	11	12	14	15	17	19	19	21	23	24	26
50	25.3	44	0.750	11	12	14	15	17	19	19	21	22	24	26
50	22.1	44	0.875	11	12	14	15	17	19	19	21	22	25	26
50	19.0	44	1.000	11	12	14	15	17	19	20	22	24	26	26
50	12.8	44	1.250	11	13	15	16	18	20	21	23	26	26	28
50	6.5	44	1.500	14	15	17	18	20	22	25	26	28	30	31
50	38.4	54	0.625	11	12	13	15	16	18	18	20	21	21	23
50	35.3	54	0.750	11	12	13	15	16	17	18	20	21	21	23
50	32.1	54	0.875	11	12	13	14	16	17	18	19	21	22	23
50	29.0	54	1.000	11	12	13	14	16	17	18	19	20	21	23
50	22.8	54	1.250	11	12	13	14	16	17	18	20	21	22	23
50	16.5	54	1.500	11	11	13	14	16	18	18	20	21	23	23
50	45.3	64	0.750	12	12	14	16	16	17	18	18	20	20	21
50	42.1	64	0.875	12	13	13	15	16	16	18	19	19	20	21
50	39.0	64	1.000	11	13	13	15	16	17	18	19	19	20	22
50	32.8	64	1.250	11	12	14	15	16	16	18	18	19	19	21
50	26.5	64	1.500	11	12	13	14	15	16	18	19	19	20	21
50	14.0	64	2.000	11	11	13	14	16	16	18	19	20	21	22
50	57.3	76	0.750	13	13	15	15	17	17	19	20	21	22	22
50	54.1	76	0.875	12	13	14	16	16	17	18	21	21	21	22
50	51.0	76	1.000	12	13	14	16	16	17	18	21	21	21	22
50	44.8	76	1.250	12	13	15	16	17	17	18	20	21	21	22
50	38.5	76	1.500	12	13	14	15	16	17	18	19	20	20	21
50	26.0	76	2.000	12	13	14	16	17	17	18	19	19	20	20
50	68.1	90	0.875	15	15	16	18	20	20	21	23	24	24	27
50	65.0	90	1.000	15	16	17	19	19	19	20	22	23	24	25
50	58.8	90	1.250	14	15	16	17	18	20	20	22	22	23	23
50	52.5	90	1.500	14	14	16	17	17	19	19	21	21	23	23
50	40.0	90	2.000	13	14	15	16	16	18	19	20	21	22	23
50	15.0	90	3.000	12	13	14	15	17	18	18	19	19	21	22
50	82.1	104	0.875	19	21	22	22	23	24	24	26	26	27	29
50	79.0	104	1.000	18	19	20	22	22	22	24	26	26	27	27
50	72.8	104	1.250	17	19	20	21	22	22	23	25	26	27	27
50	66.5	104	1.500	16	17	18	19	21	21	21	22	24	26	26
50	54.0	104	2.000	15	15	17	18	20	20	22	22	22	23	23
50	29.0	104	3.000	13	14	15	16	20	20	20	20	20	21	22
50	95.0	120	1.000	27	28	28	28	29	29	31	32	32	35	35
50	88.8	120	1.250	24	25	25	26	29	29	29	30	31	33	35
50	82.5	120	1.500	22	24	24	25	27	28	28	29	30	31	33
50	70.0	120	2.000	20	20	22	23	24	24	24	26	27	28	29
50	45.0	120	3.000	17	18	18	20	22	22	23	23	24	26	27
50	20.0	120	4.000	16	17	18	19	21	21	22	22	23	24	25
50	111.0	136	1.000	30	31	32	33	34	36	37	37	37	39	41
50	104.8	136	1.250	27	29	29	30	31	32	34	35	36	36	38
50	98.5	136	1.500	27	28	29	29	30	31	31	33	35	35	36
50	86.0	136	2.000	27	27	27	29	30	31	31	31	33	35	36
50	61.0	136	3.000	21	22	23	24	27	27	27	27	28	29	31
50	36.0	136	4.000	20	20	21	22	23	25	25	25	25	27	28

**X - Bridging Requirements** - Reference SP-Series Specification **Section 904.5 BRIDGING** on page 92

1 row	2 rows	3 rows	4 rows	5 rows	6 rows	7 rows	8 rows	9 rows	10 rows
-------	--------	--------	--------	--------	--------	--------	--------	--------	---------

**Bearing Seat Depth** - Profiles to the right of a colored line have a seat depth as indicated in the chart below

Minimum 5"	7½"	10"	Maximum 12½"
------------	-----	-----	--------------

# GABLE JOIST (SPGB) TABLES

Span ft	End Depth in	Center Depth in	Top Chord Pitch in/ft	Top Chord Uniform Load - Pounds per Linear Foot (plf) (ASD)										
				300	350	400	450	500	550	600	650	700	750	800
				Joist Self-Weight - Pounds per Linear Foot (plf)										
60	24.5	32	0.250	17	20	25	26	29	32	34	37	40	46	50
60	20.8	32	0.375	18	21	25	28	29	31	36	37	40	46	50
60	17.0	32	0.500	18	21	25	27	30	32	36	39	41	50	51
60	13.3	32	0.625	19	22	25	29	32	35	38	41	51	51	51
60	9.5	32	0.750	21	25	28	31	34	38	41	47	51	51	57
60	5.8	32	0.875	23	28	29	34	38	42	52	52	57	60	60
60	28.8	40	0.375	15	17	19	22	24	26	28	30	33	34	37
60	25.0	40	0.500	15	18	20	22	24	26	28	31	33	36	38
60	21.3	40	0.625	16	18	20	21	25	28	29	31	33	36	38
60	17.5	40	0.750	16	19	20	23	25	28	29	32	35	36	39
60	13.8	40	0.875	17	19	21	24	26	29	31	34	37	39	42
60	10.0	40	1.000	18	20	22	26	28	32	32	37	40	42	48
60	31.3	50	0.625	14	16	18	20	21	23	24	26	28	29	32
60	27.5	50	0.750	14	16	18	19	21	23	25	26	29	31	32
60	23.8	50	0.875	14	16	18	19	21	23	26	27	28	31	33
60	20.0	50	1.000	14	16	18	20	21	24	26	28	29	32	34
60	12.5	50	1.250	15	17	19	20	23	26	29	30	32	33	37
60	5.0	50	1.500	17	19	22	25	29	30	32	35	37	40	42
60	41.3	60	0.625	14	15	16	18	19	21	22	24	24	26	28
60	37.5	60	0.750	14	15	16	18	19	21	22	24	24	26	29
60	33.8	60	0.875	14	15	17	18	20	21	22	24	25	27	29
60	30.0	60	1.000	14	15	17	19	20	21	22	24	25	27	28
60	22.5	60	1.250	14	15	16	18	20	21	23	25	26	27	29
60	15.0	60	1.500	14	15	17	19	20	21	24	26	27	29	31
60	49.5	72	0.750	15	16	17	17	19	20	21	23	25	25	27
60	45.8	72	0.875	15	16	17	17	19	20	21	22	25	25	26
60	42.0	72	1.000	15	16	17	18	19	20	21	23	24	25	27
60	34.5	72	1.250	14	15	17	18	19	20	20	22	25	25	26
60	27.0	72	1.500	14	15	16	18	19	19	21	22	24	25	26
60	12.0	72	2.000	14	15	17	19	20	21	22	24	26	27	28
60	63.5	86	0.750	16	17	18	19	21	21	23	24	25	27	28
60	59.8	86	0.875	16	17	18	19	19	21	23	24	25	27	28
60	56.0	86	1.000	15	16	17	18	20	21	22	24	25	26	28
60	48.5	86	1.250	15	16	17	18	20	20	21	22	26	26	26
60	41.0	86	1.500	15	16	17	17	19	20	21	22	24	25	26
60	26.0	86	2.000	15	16	17	18	18	20	21	22	23	25	25
60	73.8	100	0.875	23	23	23	24	24	25	26	27	28	29	29
60	70.0	100	1.000	22	22	23	24	24	25	25	26	29	29	29
60	62.5	100	1.250	22	22	23	23	23	24	25	25	27	28	29
60	55.0	100	1.500	21	22	22	23	23	24	24	25	26	28	28
60	40.0	100	2.000	22	22	22	22	22	23	24	25	26	27	27
60	10.0	100	3.000	21	21	22	22	23	23	23	24	24	26	26
60	89.8	116	0.875	27	28	28	29	30	30	30	31	33	34	35
60	86.0	116	1.000	26	27	27	27	29	29	29	30	32	32	34
60	78.5	116	1.250	25	25	25	26	28	29	29	29	31	31	33
60	71.0	116	1.500	24	25	25	25	27	27	29	29	30	30	31
60	56.0	116	2.000	23	24	24	25	25	27	27	28	28	28	29
60	26.0	116	3.000	23	23	23	23	24	24	25	27	27	28	28
60	102.0	132	1.000	31	32	34	34	35	36	38	39	39	39	40
60	94.5	132	1.250	30	30	31	32	33	33	34	34	36	37	37
60	87.0	132	1.500	29	29	30	31	32	32	32	33	33	35	37
60	72.0	132	2.000	28	28	28	28	30	30	31	31	33	33	33
60	42.0	132	3.000	25	25	26	26	27	27	27	29	30	30	30
60	12.0	132	4.000	24	24	25	25	26	26	26	29	29	29	29
60	118.0	148	1.000	36	36	37	37	39	40	41	41	41	43	47
60	110.5	148	1.250	36	38	38	39	40	42	42	43	43	44	46
60	103.0	148	1.500	34	35	36	36	38	39	40	42	42	42	43
60	88.0	148	2.000	32	32	33	34	35	35	35	37	37	38	40
60	58.0	148	3.000	30	30	30	31	31	32	33	34	34	34	35
60	28.0	148	4.000	28	28	28	28	28	31	31	31	31	32	32

**X - Bridging Requirements** - Reference SP-Series Specification **Section 904.5 BRIDGING** on page 92

1 row	2 rows	3 rows	4 rows	5 rows	6 rows	7 rows	8 rows	9 rows	10 rows
-------	--------	--------	--------	--------	--------	--------	--------	--------	---------

**Bearing Seat Depth** - Profiles to the right of a colored line have a seat depth as indicated in the chart below

Minimum 5"	7½"	10"	Maximum 12½"
------------	-----	-----	--------------

# GABLE JOIST (SPGB) TABLES

Span ft	End Depth in	Center Depth in	Top Chord Pitch in/ft	Top Chord Uniform Load - Pounds per Linear Foot (plf) (ASD)										
				300	350	400	450	500	550	600	650	700	750	800
				Joist Self-Weight - Pounds per Linear Foot (plf)										
70	27.3	36	0.250	21	25	29	32	35	39	45	50	50	55	58
70	22.9	36	0.375	21	25	28	31	35	39	46	50	50	55	58
70	18.5	36	0.500	22	26	29	32	35	39	46	50	51	58	58
70	14.1	36	0.625	24	28	30	34	37	41	51	51	55	59	63
70	9.8	36	0.750	25	29	32	38	41	52	52	57	60	63	67
70	5.4	36	0.875	29	32	38	42	52	52	60	64	68	76	82
70	32.9	46	0.375	20	21	23	26	29	30	33	36	38	40	47
70	28.5	46	0.500	20	20	24	26	28	31	33	36	39	41	46
70	24.1	46	0.625	20	21	24	26	29	32	34	37	40	42	51
70	19.8	46	0.750	19	22	25	28	30	32	37	38	42	46	51
70	15.4	46	0.875	20	22	26	29	31	34	37	40	48	51	51
70	11.0	46	1.000	20	25	28	29	32	37	40	41	51	52	52
70	36.1	58	0.625	20	20	21	23	24	26	29	31	33	35	37
70	31.8	58	0.750	20	20	21	22	25	27	29	31	33	35	37
70	27.4	58	0.875	20	20	21	23	25	27	29	31	34	35	37
70	23.0	58	1.000	20	20	21	23	26	27	29	32	35	37	38
70	14.3	58	1.250	20	20	22	25	27	29	32	35	38	39	43
70	5.5	58	1.500	20	22	26	29	32	35	38	41	48	52	52
70	48.1	70	0.625	20	21	21	21	23	24	25	27	30	32	33
70	43.8	70	0.750	20	20	21	22	23	24	25	27	30	32	34
70	39.4	70	0.875	20	20	21	21	23	24	25	27	30	32	34
70	35.0	70	1.000	20	20	21	21	22	24	26	27	30	32	33
70	26.3	70	1.250	20	20	21	22	22	24	27	28	30	33	34
70	17.5	70	1.500	20	20	21	22	23	25	27	29	32	33	35
70	57.8	84	0.750	21	21	22	23	23	25	26	27	30	31	33
70	53.4	84	0.875	21	21	22	23	24	25	26	27	29	31	32
70	49.0	84	1.000	21	21	22	22	23	25	26	26	29	31	32
70	40.3	84	1.250	21	21	21	22	23	24	25	26	28	31	32
70	31.5	84	1.500	21	21	21	22	23	24	25	26	28	30	33
70	14.0	84	2.000	20	21	21	22	23	24	26	29	30	31	34
70	71.8	98	0.750	23	24	24	24	25	27	28	28	30	32	33
70	67.4	98	0.875	23	23	23	23	25	25	27	28	29	32	32
70	63.0	98	1.000	23	23	23	24	24	25	27	28	29	31	33
70	54.3	98	1.250	22	22	23	23	24	25	26	27	29	31	32
70	45.5	98	1.500	22	22	23	23	23	24	26	26	27	29	32
70	28.0	98	2.000	21	22	22	23	23	24	25	26	28	29	31
70	81.4	112	0.875	25	27	27	27	27	30	30	30	32	35	35
70	77.0	112	1.000	24	26	26	26	27	30	30	30	31	32	33
70	68.3	112	1.250	25	25	26	26	27	28	29	30	31	32	35
70	59.5	112	1.500	24	24	24	25	26	27	28	29	30	33	33
70	42.0	112	2.000	23	23	23	24	25	26	27	28	29	32	33
70	7.0	112	3.000	22	23	23	23	24	25	26	27	29	31	33
70	95.4	126	0.875	28	28	29	31	31	31	32	34	36	36	38
70	91.0	126	1.000	28	28	31	31	31	33	34	36	36	38	38
70	82.3	126	1.250	27	29	29	30	32	32	32	32	34	38	38
70	73.5	126	1.500	26	27	28	29	29	31	31	32	33	33	37
70	56.0	126	2.000	26	26	27	27	28	29	30	30	32	34	35
70	21.0	126	3.000	24	24	25	26	26	27	27	29	31	31	34
70	109.4	140	0.875	34	36	36	37	39	40	40	42	42	44	47
70	105.0	140	1.000	32	36	36	36	38	38	39	41	41	41	43
70	96.3	140	1.250	31	32	33	34	34	35	36	38	39	40	41
70	87.5	140	1.500	30	30	33	34	35	35	35	37	38	39	40
70	70.0	140	2.000	28	30	30	31	32	33	33	34	35	36	38
70	35.0	140	3.000	26	26	27	27	28	29	30	30	31	32	35
70	119.0	154	1.000	40	40	42	43	44	44	46	48	53	53	54
70	110.3	154	1.250	37	38	38	38	41	41	42	43	44	44	47
70	101.5	154	1.500	34	36	37	37	38	40	41	42	42	43	44
70	84.0	154	2.000	32	32	34	35	36	37	37	37	40	41	42
70	49.0	154	3.000	29	29	30	30	32	32	33	33	34	35	37
70	14.0	154	4.000	27	27	29	29	29	31	31	32	33	33	36

**X - Bridging Requirements** - Reference SP-Series Specification **Section 904.5 BRIDGING** on page 92

1 row	2 rows	3 rows	4 rows	5 rows	6 rows	7 rows	8 rows	9 rows	10 rows
-------	--------	--------	--------	--------	--------	--------	--------	--------	---------

**Bearing Seat Depth** - Profiles to the right of a colored line have a seat depth as indicated in the chart below

Minimum 5"	7½"	10"	Maximum 12½"
------------	-----	-----	--------------

# GABLE JOIST (SPGB) TABLES

Span ft	End Depth in	Center Depth in	Top Chord Pitch in/ft	Top Chord Uniform Load - Pounds per Linear Foot (plf) (ASD)										
				300	350	400	450	500	550	600	650	700	750	800
				Joist Self-Weight - Pounds per Linear Foot (plf)										
80	30.0	40	0.250	26	30	34	38	44	50	57	62	65	70	
80	25.0	40	0.375	26	30	35	38	46	50	58	62	65	70	
80	20.0	40	0.500	26	31	34	39	46	51	58	62	66	70	
80	15.0	40	0.625	28	32	36	41	51	54	59	66	66	74	
80	10.0	40	0.750	29	34	40	52	52	55	60	67	67	85	
80	5.0	40	0.875	34	39	52	52	60	67	67	82	85	106	
80	35.0	50	0.375	21	25	28	30	33	36	40	42	51	51	51
80	30.0	50	0.500	21	26	28	30	34	37	40	47	50	51	52
80	25.0	50	0.625	22	26	28	31	34	38	41	51	51	51	55
80	20.0	50	0.750	22	26	30	33	37	40	42	51	52	52	59
80	15.0	50	0.875	23	28	30	34	39	42	52	52	52	59	59
80	10.0	50	1.000	26	29	33	37	41	51	52	53	60	60	67
80	42.0	62	0.500	21	22	23	27	29	32	33	36	38	42	48
80	37.0	62	0.625	21	21	24	27	29	32	35	36	38	41	48
80	32.0	62	0.750	21	22	25	26	29	32	35	38	39	43	47
80	27.0	62	0.875	20	21	24	27	29	32	35	37	41	47	52
80	22.0	62	1.000	20	23	26	28	30	33	38	39	42	47	52
80	12.0	62	1.250	21	25	29	30	33	38	41	43	52	52	52
80	51.0	76	0.625	21	21	23	24	26	29	31	33	35	38	39
80	46.0	76	0.750	21	21	22	24	26	28	31	33	35	37	39
80	41.0	76	0.875	21	21	23	24	27	28	31	33	35	37	39
80	36.0	76	1.000	20	21	22	24	26	29	31	34	35	38	40
80	26.0	76	1.250	20	21	23	24	27	30	33	33	36	39	42
80	16.0	76	1.500	21	21	23	27	30	32	33	36	39	41	44
80	60.0	90	0.750	22	22	23	25	26	28	30	32	34	36	38
80	55.0	90	0.875	22	22	23	24	26	27	30	32	34	35	38
80	50.0	90	1.000	22	22	23	25	25	28	31	32	35	36	38
80	40.0	90	1.250	21	22	22	24	25	28	30	31	34	37	37
80	30.0	90	1.500	21	21	22	24	25	28	30	32	34	36	38
80	10.0	90	2.000	21	22	22	26	28	31	32	36	36	40	43
80	74.0	104	0.750	24	24	26	27	29	29	31	33	35	36	39
80	69.0	104	0.875	23	24	25	26	28	28	30	33	35	36	38
80	64.0	104	1.000	23	24	25	26	27	28	31	32	34	36	37
80	54.0	104	1.250	23	23	24	25	26	27	29	32	33	34	37
80	44.0	104	1.500	22	23	24	25	26	27	29	30	33	35	36
80	24.0	104	2.000	22	22	23	24	25	27	29	31	33	35	36
80	88.0	118	0.750	28	28	28	29	31	31	33	36	38	38	41
80	83.0	118	0.875	27	27	29	30	30	31	32	35	35	37	39
80	78.0	118	1.000	27	27	28	28	30	31	31	33	36	36	39
80	68.0	118	1.250	26	26	27	28	29	30	32	33	35	37	38
80	58.0	118	1.500	24	25	26	26	29	29	31	33	35	35	38
80	38.0	118	2.000	24	24	25	26	27	28	29	32	34	36	37
80	97.0	132	0.875	31	31	33	34	34	35	37	39	41	42	43
80	92.0	132	1.000	30	31	32	33	33	34	35	37	40	41	42
80	82.0	132	1.250	29	30	30	32	33	33	34	36	38	40	41
80	72.0	132	1.500	27	29	30	31	31	32	33	35	38	38	41
80	52.0	132	2.000	26	27	28	28	30	31	32	35	36	38	39
80	12.0	132	3.000	25	25	25	27	28	28	30	32	35	35	38
80	111.0	146	0.875	33	35	36	37	38	39	41	42	42	44	47
80	106.0	146	1.000	33	34	35	35	37	37	39	41	45	45	46
80	96.0	146	1.250	34	35	35	37	37	39	39	42	43	44	45
80	86.0	146	1.500	32	34	34	34	34	36	37	39	41	42	42
80	66.0	146	2.000	29	31	31	34	34	34	35	38	40	40	42
80	26.0	146	3.000	27	27	27	30	30	30	32	33	35	37	39
80	125.0	160	0.875	41	42	43	45	46	47	47	49	54	54	55
80	120.0	160	1.000	40	40	42	43	45	45	47	49	54	54	54
80	110.0	160	1.250	37	38	39	41	42	44	44	44	46	49	52
80	100.0	160	1.500	38	40	40	41	42	43	43	43	48	49	49
80	80.0	160	2.000	34	35	36	38	38	38	39	41	41	44	45
80	40.0	160	3.000	29	31	32	32	34	35	36	37	38	40	42

**X - Bridging Requirements** - Reference SP-Series Specification **Section 904.5 BRIDGING** on page 92

1 row	2 rows	3 rows	4 rows	5 rows	6 rows	7 rows	8 rows	9 rows	10 rows
-------	--------	--------	--------	--------	--------	--------	--------	--------	---------

**Bearing Seat Depth** - Profiles to the right of a colored line have a seat depth as indicated in the chart below

Minimum 5"	7½"	10"	Maximum 12½"
------------	-----	-----	--------------

# GABLE JOIST (SPGB) TABLES

Span ft	End Depth in	Center Depth in	Top Chord Pitch in/ft	Top Chord Uniform Load - Pounds per Linear Foot (plf) (ASD)										
				300	350	400	450	500	550	600	650	700	750	800
				Joist Self-Weight - Pounds per Linear Foot (plf)										
90	34.8	46	0.250	28	32	36	40	46	50	54	58	66	71	73
90	29.1	46	0.375	28	32	36	40	50	50	54	58	65	70	73
90	23.5	46	0.500	30	32	38	41	50	51	59	59	66	69	74
90	17.9	46	0.625	29	34	40	51	51	56	59	66	66	74	80
90	12.3	46	0.750	32	37	41	51	51	60	66	66	75	85	85
90	6.6	46	0.875	37	42	52	56	59	67	76	85	85	103	103
90	41.1	58	0.375	23	27	30	33	37	40	48	51	52	56	60
90	35.5	58	0.500	24	27	30	33	37	40	47	51	51	56	60
90	29.9	58	0.625	24	28	31	34	37	40	51	52	52	59	59
90	24.3	58	0.750	25	28	32	35	38	42	51	52	56	59	59
90	18.6	58	0.875	26	30	33	37	41	46	52	52	60	60	67
90	13.0	58	1.000	27	32	34	40	47	52	52	60	60	67	67
90	49.5	72	0.500	23	24	26	29	33	35	38	40	43	49	53
90	43.9	72	0.625	23	24	26	30	32	36	37	40	42	49	53
90	38.3	72	0.750	23	24	27	30	33	36	39	42	48	49	53
90	32.6	72	0.875	22	24	27	29	32	35	38	41	47	53	53
90	27.0	72	1.000	23	25	27	31	32	37	39	41	48	53	53
90	15.8	72	1.250	24	27	30	32	35	39	43	53	53	53	61
90	57.9	86	0.625	24	25	25	27	31	34	36	37	40	43	49
90	52.3	86	0.750	24	24	25	28	31	33	36	37	40	42	48
90	46.6	86	0.875	24	24	25	27	30	33	35	38	39	42	48
90	41.0	86	1.000	24	24	25	27	30	33	35	38	40	42	47
90	29.8	86	1.250	24	24	25	28	30	34	36	38	41	43	48
90	18.5	86	1.500	23	25	26	30	32	35	38	40	42	50	53
90	66.3	100	0.750	25	25	26	27	30	32	35	37	39	41	44
90	60.6	100	0.875	25	25	26	27	29	32	34	37	38	40	43
90	55.0	100	1.000	25	25	26	26	29	32	34	39	39	42	44
90	43.8	100	1.250	25	25	25	26	29	32	34	37	38	41	44
90	32.5	100	1.500	24	24	25	26	28	31	34	36	38	40	44
90	10.0	100	2.000	24	24	26	29	32	34	37	40	44	49	54
90	80.3	114	0.750	28	28	28	30	31	34	36	38	39	42	43
90	74.6	114	0.875	28	28	29	29	30	33	35	37	39	41	43
90	69.0	114	1.000	28	28	28	29	30	33	35	37	39	41	43
90	57.8	114	1.250	27	27	27	28	29	32	34	36	38	39	41
90	46.5	114	1.500	26	27	27	27	29	31	34	36	38	40	41
90	24.0	114	2.000	25	25	26	27	29	32	35	37	38	41	43
90	94.3	128	0.750	32	32	32	33	34	36	39	41	41	45	46
90	88.6	128	0.875	31	31	32	32	33	35	38	39	40	44	45
90	83.0	128	1.000	30	31	31	32	33	35	37	39	41	42	45
90	71.8	128	1.250	30	30	31	31	32	35	37	38	40	40	44
90	60.5	128	1.500	28	29	30	30	30	33	36	37	39	41	43
90	38.0	128	2.000	27	28	28	29	30	32	35	37	38	40	42
90	102.6	142	0.875	35	35	35	36	38	40	42	43	45	46	50
90	97.0	142	1.000	34	34	34	35	38	40	41	41	44	44	49
90	85.8	142	1.250	34	34	34	34	35	37	40	43	43	46	46
90	74.5	142	1.500	32	32	33	34	34	36	38	40	42	43	45
90	52.0	142	2.000	30	30	31	31	32	33	37	38	40	41	43
90	7.0	142	3.000	28	28	29	29	31	34	36	38	40	42	44
90	116.6	156	0.875	38	39	39	41	43	44	47	50	52	53	55
90	111.0	156	1.000	36	40	41	43	45	46	46	49	51	51	54
90	99.8	156	1.250	37	38	38	39	39	41	46	46	46	48	51
90	88.5	156	1.500	35	35	37	37	37	39	42	45	45	48	48
90	66.0	156	2.000	33	34	34	36	36	38	40	42	45	46	48
90	21.0	156	3.000	30	31	31	32	34	35	36	38	41	42	44
90	130.6	170	0.875	44	46	48	48	49	51	58	58	58	59	60
90	125.0	170	1.000	41	42	44	46	47	48	49	52	56	57	59
90	113.8	170	1.250	40	43	44	46	48	48	49	51	54	56	57
90	102.5	170	1.500	40	40	40	43	45	46	47	48	48	50	56
90	80.0	170	2.000	36	36	36	39	41	42	43	44	46	49	53
90	35.0	170	3.000	33	33	34	35	35	41	41	41	44	44	47

**X - Bridging Requirements** - Reference SP-Series Specification **Section 904.5 BRIDGING** on page 92

1 row	2 rows	3 rows	4 rows	5 rows	6 rows	7 rows	8 rows	9 rows	10 rows
-------	--------	--------	--------	--------	--------	--------	--------	--------	---------

**Bearing Seat Depth** - Profiles to the right of a colored line have a seat depth as indicated in the chart below

Minimum 5"	7½"	10"	Maximum 12½"
------------	-----	-----	--------------

# GABLE JOIST (SPGB) TABLES

Span ft	End Depth in	Center Depth in	Top Chord Pitch in/ft	Top Chord Uniform Load - Pounds per Linear Foot (plf) (ASD)										
				300	350	400	450	500	550	600	650	700	750	800
				Joist Self-Weight - Pounds per Linear Foot (plf)										
100	37.5	50	0.250	32	36	45	50	54	58	63	71	74	82	92
100	31.3	50	0.375	32	36	47	50	55	58	62	70	73	83	92
100	25.0	50	0.500	32	38	46	50	55	59	66	71	74	83	93
100	18.8	50	0.625	34	40	50	51	59	63	66	75	80	84	100
100	12.5	50	0.750	37	41	51	56	60	67	75	85	85	103	103
100	6.3	50	0.875	41	52	60	63	73	81	84	103	119	128	128
100	43.3	62	0.375	27	30	34	37	42	51	52	56	59	63	67
100	37.0	62	0.500	27	30	34	39	42	51	51	56	59	64	67
100	30.8	62	0.625	28	31	34	38	47	51	52	59	59	67	68
100	24.5	62	0.750	28	31	37	40	47	51	56	60	64	67	72
100	18.3	62	0.875	30	33	39	42	51	51	59	59	68	71	74
100	12.0	62	1.000	32	38	42	52	52	60	60	67	75	81	85
100	51.0	76	0.500	25	28	30	34	37	39	43	49	54	55	58
100	44.8	76	0.625	24	27	30	33	37	39	42	48	53	54	57
100	38.5	76	0.750	24	27	30	33	38	42	48	53	53	57	61
100	32.3	76	0.875	24	28	31	35	38	42	48	52	53	56	61
100	26.0	76	1.000	25	29	32	35	38	43	52	52	53	60	61
100	13.5	76	1.250	27	31	35	39	42	52	53	57	61	65	69
100	58.8	90	0.625	25	25	28	31	35	37	40	43	49	50	55
100	52.5	90	0.750	25	25	28	32	36	39	40	43	48	50	55
100	46.3	90	0.875	24	26	29	32	35	38	41	44	50	50	54
100	40.0	90	1.000	24	26	28	31	35	37	40	43	50	54	55
100	27.5	90	1.250	24	27	30	33	36	39	42	48	53	54	55
100	15.0	90	1.500	25	28	32	35	39	42	49	54	54	58	62
100	72.8	104	0.625	27	27	28	31	34	36	39	41	44	49	51
100	66.5	104	0.750	26	27	28	31	33	36	38	42	44	48	51
100	60.3	104	0.875	26	26	27	32	34	37	38	42	44	48	50
100	54.0	104	1.000	25	26	27	31	34	36	38	41	44	49	50
100	41.5	104	1.250	25	26	28	31	34	37	39	41	44	48	51
100	29.0	104	1.500	25	25	28	31	34	36	39	43	44	50	55
100	80.5	118	0.750	29	30	31	32	35	37	40	40	43	47	50
100	74.3	118	0.875	28	29	30	32	35	37	39	41	43	46	50
100	68.0	118	1.000	28	28	30	32	35	37	39	41	43	46	49
100	55.5	118	1.250	27	28	29	31	34	36	38	42	42	46	49
100	43.0	118	1.500	27	27	28	31	33	36	39	41	43	46	49
100	18.0	118	2.000	26	26	29	31	33	36	39	42	45	51	51
100	94.5	132	0.750	32	32	34	35	38	40	42	43	46	49	52
100	88.3	132	0.875	31	31	33	34	36	39	40	42	45	47	52
100	82.0	132	1.000	31	32	33	34	37	38	40	42	46	46	54
100	69.5	132	1.250	30	30	31	33	35	37	39	41	44	46	51
100	57.0	132	1.500	29	30	30	31	35	36	38	41	44	44	51
100	32.0	132	2.000	28	28	29	31	33	36	38	41	42	46	50
100	108.5	146	0.750	37	37	37	41	43	45	46	48	50	50	57
100	102.3	146	0.875	35	35	37	38	38	40	43	46	48	50	55
100	96.0	146	1.000	35	35	36	37	40	41	43	45	48	49	55
100	83.5	146	1.250	34	34	35	36	38	41	42	44	46	49	54
100	71.0	146	1.500	32	32	34	34	37	38	41	43	45	46	53
100	46.0	146	2.000	30	31	31	32	36	37	40	42	43	45	52
100	116.3	160	0.875	40	40	41	44	46	47	48	50	53	58	59
100	110.0	160	1.000	39	39	41	42	44	46	47	49	53	57	58
100	97.5	160	1.250	38	39	40	40	42	46	46	50	50	57	57
100	85.0	160	1.500	35	37	38	40	42	44	45	47	49	54	57
100	60.0	160	2.000	33	35	35	36	38	41	43	46	46	48	51
100	10.0	160	3.000	31	31	32	34	36	39	40	43	46	48	52
100	130.3	174	0.875	44	46	48	49	49	52	57	58	59	59	64
100	124.0	174	1.000	44	46	48	48	51	51	54	56	57	62	63
100	111.5	174	1.250	41	41	45	46	49	49	51	53	59	59	61
100	99.0	174	1.500	39	41	41	43	45	50	50	51	55	56	58
100	74.0	174	2.000	38	39	39	40	42	45	47	47	49	57	57
100	24.0	174	3.000	32	34	35	36	38	40	42	44	46	52	52

**X - Bridging Requirements** - Reference SP-Series Specification Section 904.5 BRIDGING on page 92

1 row	2 rows	3 rows	4 rows	5 rows	6 rows	7 rows	8 rows	9 rows	10 rows
-------	--------	--------	--------	--------	--------	--------	--------	--------	---------

**Bearing Seat Depth** - Profiles to the right of a colored line have a seat depth as indicated in the chart below

Minimum 5"	7½"	10"	Maximum 12½"
------------	-----	-----	--------------

# GABLE JOIST (SPGB) TABLES

Span ft	End Depth in	Center Depth in	Top Chord Pitch in/ft	Top Chord Uniform Load - Pounds per Linear Foot (plf) (ASD)										
				300	350	400	450	500	550	600	650	700	750	800
				Joist Self-Weight - Pounds per Linear Foot (plf)										
110	42.3	56	0.250	34	39	46	51	55	63	66	73	79	83	93
110	35.4	56	0.375	34	39	46	50	59	62	66	73	79	84	93
110	28.5	56	0.500	34	39	50	51	59	62	66	74	82	83	100
110	21.6	56	0.625	36	41	51	54	59	66	75	80	84	101	101
110	14.8	56	0.750	40	52	52	59	67	71	81	85	103	103	117
110	7.9	56	0.875	47	51	60	67	76	85	102	102	120	127	127
110	47.4	68	0.375	29	34	38	41	52	52	56	60	64	68	72
110	40.5	68	0.500	29	33	37	42	52	52	56	60	68	68	75
110	33.6	68	0.625	30	34	38	47	51	52	59	60	67	71	75
110	26.8	68	0.750	31	35	40	48	51	55	59	64	67	76	80
110	19.9	68	0.875	32	37	42	52	52	60	64	67	75	80	85
110	13.0	68	1.000	34	40	52	52	60	64	67	75	82	86	95
110	52.5	80	0.500	28	30	34	38	42	49	54	54	58	62	65
110	45.6	80	0.625	27	30	34	39	42	48	54	54	58	62	66
110	38.8	80	0.750	27	30	35	39	42	49	53	58	61	62	65
110	31.9	80	0.875	27	31	36	38	43	52	53	58	61	64	69
110	25.0	80	1.000	29	32	38	42	48	53	53	59	61	68	71
110	11.3	80	1.250	33	38	41	53	53	61	61	68	72	77	87
110	57.6	92	0.625	28	29	32	36	40	43	48	50	55	59	59
110	50.8	92	0.750	28	29	32	36	39	43	50	50	55	59	60
110	43.9	92	0.875	28	29	32	37	40	43	50	54	55	58	63
110	37.0	92	1.000	28	29	33	37	40	43	50	54	55	58	63
110	23.3	92	1.250	28	30	33	40	42	49	53	54	58	62	66
110	9.5	92	1.500	30	35	38	44	53	54	58	62	69	70	77
110	69.6	104	0.625	29	31	33	36	39	42	45	50	52	53	58
110	62.8	104	0.750	28	30	32	35	38	41	43	50	52	52	60
110	55.9	104	0.875	28	29	32	35	37	41	44	49	52	56	60
110	49.0	104	1.000	28	29	31	34	37	40	43	48	51	56	59
110	35.3	104	1.250	28	29	31	35	38	41	44	50	55	56	59
110	21.5	104	1.500	28	29	33	37	40	43	49	54	55	59	62
110	74.8	116	0.750	31	32	33	36	38	40	43	45	50	53	55
110	67.9	116	0.875	30	31	33	36	38	40	43	45	50	52	55
110	61.0	116	1.000	30	30	33	35	38	39	42	45	51	52	54
110	47.3	116	1.250	29	30	31	34	38	39	42	45	51	53	57
110	33.5	116	1.500	28	30	32	34	37	40	43	49	51	57	58
110	6.0	116	2.000	29	32	36	40	43	50	55	55	63	64	67
110	86.8	128	0.750	34	34	36	38	39	41	45	47	52	53	56
110	79.9	128	0.875	32	34	35	37	39	41	44	46	51	52	55
110	73.0	128	1.000	32	34	35	37	38	41	44	47	50	53	54
110	59.3	128	1.250	31	32	34	37	37	40	43	46	50	51	54
110	45.5	128	1.500	30	31	33	35	38	41	44	46	50	52	54
110	18.0	128	2.000	29	31	32	35	38	41	44	51	52	56	58
110	98.8	140	0.750	35	37	40	41	43	44	46	49	53	54	56
110	91.9	140	0.875	36	37	38	40	41	44	44	48	51	55	55
110	85.0	140	1.000	35	36	37	39	40	42	45	48	52	53	54
110	71.3	140	1.250	33	34	35	37	40	40	43	46	52	52	54
110	57.5	140	1.500	33	34	35	37	39	40	42	46	51	51	52
110	30.0	140	2.000	31	32	34	35	38	41	42	46	51	53	54
110	110.8	152	0.750	39	42	42	45	45	48	49	52	57	58	58
110	103.9	152	0.875	38	40	41	43	45	46	49	52	53	56	59
110	97.0	152	1.000	37	39	40	42	43	45	48	51	55	55	58
110	83.3	152	1.250	37	38	39	41	42	43	45	48	51	55	56
110	69.5	152	1.500	35	36	37	39	42	42	44	48	53	54	55
110	42.0	152	2.000	33	34	36	37	39	40	43	46	52	52	54
110	122.8	164	0.750	44	45	48	48	49	50	52	58	59	61	62
110	115.9	164	0.875	43	45	45	47	48	48	51	54	58	60	61
110	109.0	164	1.000	42	43	44	46	47	48	50	53	59	59	60
110	95.3	164	1.250	40	42	43	44	46	47	49	52	56	57	60
110	81.5	164	1.500	39	39	40	43	44	44	47	50	52	57	58
110	54.0	164	2.000	36	37	38	41	43	43	45	48	53	55	55

**X - Bridging Requirements** - Reference SP-Series Specification **Section 904.5 BRIDGING** on page 92

1 row	2 rows	3 rows	4 rows	5 rows	6 rows	7 rows	8 rows	9 rows	10 rows
-------	--------	--------	--------	--------	--------	--------	--------	--------	---------

**Bearing Seat Depth** - Profiles to the right of a colored line have a seat depth as indicated in the chart below

Minimum 5"	7½"	10"	Maximum 12½"
------------	-----	-----	--------------

# GABLE JOIST (SPGB) TABLES

Span ft	End Depth in	Center Depth in	Top Chord Pitch in/ft	Top Chord Uniform Load - Pounds per Linear Foot (plf) (ASD)										
				300	350	400	450	500	550	600	650	700	750	800
				Joist Self-Weight - Pounds per Linear Foot (plf)										
120	45.0	60	0.250	38	46	51	58	62	70	75	84	93	99	100
120	37.5	60	0.375	38	46	50	58	62	70	79	83	93	100	101
120	30.0	60	0.500	38	51	51	59	66	71	80	84	93	101	101
120	22.5	60	0.625	40	51	55	59	67	75	83	83	100	100	117
120	15.0	60	0.750	47	51	59	67	75	84	84	103	116	126	126
120	7.5	60	0.875	52	60	67	75	85	103	103	127	127	127	150
120	49.5	72	0.375	33	38	42	52	53	60	61	68	72	76	86
120	42.0	72	0.500	32	38	43	52	52	59	64	68	75	80	84
120	34.5	72	0.625	33	37	48	52	56	60	64	68	75	81	84
120	27.0	72	0.750	35	40	52	52	60	60	67	75	80	85	94
120	19.5	72	0.875	37	42	52	52	60	68	72	82	85	95	104
120	12.0	72	1.000	40	52	52	59	68	72	82	86	104	104	117
120	54.0	84	0.500	30	34	39	43	49	54	58	62	65	69	73
120	46.5	84	0.625	30	34	39	42	48	53	57	62	65	70	73
120	39.0	84	0.750	30	36	38	44	52	54	57	61	65	72	76
120	31.5	84	0.875	31	36	40	49	53	53	61	65	69	73	76
120	24.0	84	1.000	33	38	41	53	53	57	60	69	73	76	82
120	9.0	84	1.250	38	43	53	57	61	68	77	81	86	103	103
120	58.5	96	0.625	29	32	37	40	44	50	54	56	60	63	68
120	51.0	96	0.750	29	32	36	40	44	50	55	58	59	66	67
120	43.5	96	0.875	29	32	38	40	43	49	55	59	63	66	67
120	36.0	96	1.000	29	34	37	40	49	54	55	58	62	65	70
120	21.0	96	1.250	31	35	39	44	54	54	58	62	66	69	78
120	6.0	96	1.500	36	42	53	53	61	66	68	76	87	87	104
120	70.5	108	0.625	30	33	36	39	43	45	50	53	58	62	63
120	63.0	108	0.750	30	32	36	39	42	46	51	52	58	60	62
120	55.5	108	0.875	30	32	35	40	43	46	51	57	57	61	65
120	48.0	108	1.000	29	31	36	40	43	48	51	56	59	60	65
120	33.0	108	1.250	29	32	35	39	44	50	55	56	60	64	66
120	18.0	108	1.500	30	34	37	43	50	55	55	59	63	67	71
120	82.5	120	0.625	32	35	36	39	42	45	51	53	55	60	63
120	75.0	120	0.750	32	33	36	39	41	45	51	52	55	62	63
120	67.5	120	0.875	31	34	36	38	41	45	50	53	54	62	63
120	60.0	120	1.000	31	32	35	39	41	44	51	53	54	62	62
120	45.0	120	1.250	30	32	35	38	41	45	50	52	57	61	61
120	30.0	120	1.500	30	32	36	39	42	45	51	56	57	60	65
120	87.0	132	0.750	34	36	38	42	45	49	52	55	58	61	61
120	79.5	132	0.875	34	35	37	39	41	44	48	53	55	57	60
120	72.0	132	1.000	34	35	37	40	41	44	47	52	55	57	65
120	57.0	132	1.250	32	34	36	41	41	44	47	53	55	56	63
120	42.0	132	1.500	31	33	34	38	40	45	49	51	55	59	63
120	12.0	132	2.000	31	34	37	41	46	51	57	58	61	66	69
120	99.0	144	0.750	38	39	41	44	45	48	50	56	57	58	63
120	91.5	144	0.875	37	38	40	43	43	46	50	54	56	57	59
120	84.0	144	1.000	36	37	40	42	43	46	49	53	55	57	62
120	69.0	144	1.250	35	36	38	42	42	45	49	52	53	57	59
120	54.0	144	1.500	33	35	37	39	41	44	48	51	54	57	60
120	24.0	144	2.000	31	33	36	40	41	45	52	53	54	60	63
120	111.0	156	0.750	42	43	46	47	47	50	53	57	60	62	62
120	103.5	156	0.875	40	41	44	46	46	50	54	56	58	60	64
120	96.0	156	1.000	39	42	43	47	47	49	52	56	57	61	61
120	81.0	156	1.250	38	39	42	43	43	46	50	54	55	57	61
120	66.0	156	1.500	35	38	40	41	43	46	49	54	54	57	60
120	36.0	156	2.000	34	36	38	40	42	45	48	52	54	56	61
120	123.0	168	0.750	46	46	48	49	52	53	60	61	62	66	68
120	115.5	168	0.875	45	45	47	48	50	51	58	59	61	63	66
120	108.0	168	1.000	43	44	47	48	48	51	54	58	61	61	63
120	93.0	168	1.250	40	43	45	48	48	50	52	58	58	59	63
120	78.0	168	1.500	40	41	42	44	45	48	51	56	57	59	60
120	48.0	168	2.000	37	38	40	42	43	45	49	55	55	56	58

**X - Bridging Requirements** - Reference SP-Series Specification **Section 904.5 BRIDGING** on page 92

1 row	2 rows	3 rows	4 rows	5 rows	6 rows	7 rows	8 rows	9 rows	10 rows
-------	--------	--------	--------	--------	--------	--------	--------	--------	---------

**Bearing Seat Depth** - Profiles to the right of a colored line have a seat depth as indicated in the chart below

Minimum 5"	7½"	10"	Maximum 12½"
------------	-----	-----	--------------

# GABLE JOIST (SPGB) TABLES

Span ft	End Depth in	Center Depth in	Top Chord Pitch in/ft	Top Chord Uniform Load - Pounds per Linear Foot (plf) (ASD)										
				300	350	400	450	500	550	600	650	700	750	800
				Joist Self-Weight - Pounds per Linear Foot (plf)										
130	49.8	66	0.250	40	51	55	59	67	74	80	84	92	101	114
130	41.6	66	0.375	40	51	55	60	67	73	79	84	100	101	114
130	33.5	66	0.500	40	51	55	59	66	74	83	84	101	101	113
130	25.4	66	0.625	47	51	59	66	71	80	84	102	102	114	123
130	17.3	66	0.750	51	56	59	67	82	84	103	103	117	125	125
130	9.1	66	0.875	51	59	67	80	85	103	120	127	127	140	149
130	53.6	78	0.375	36	41	48	53	57	61	69	72	80	85	86
130	45.5	78	0.500	36	41	52	53	60	65	68	75	80	86	94
130	37.4	78	0.625	36	41	52	53	60	65	68	76	85	85	102
130	29.3	78	0.750	37	42	52	56	60	68	76	81	85	95	102
130	21.1	78	0.875	40	52	53	60	65	72	80	86	96	103	103
130	13.0	78	1.000	43	52	60	64	73	81	86	104	104	118	126
130	57.5	90	0.500	34	38	43	49	54	58	62	66	70	74	82
130	49.4	90	0.625	33	38	42	49	54	58	63	65	72	76	81
130	41.3	90	0.750	33	39	42	53	53	58	62	69	73	77	82
130	33.1	90	0.875	33	38	44	53	54	61	66	69	77	82	86
130	25.0	90	1.000	36	42	48	53	58	61	69	73	82	87	95
130	8.8	90	1.250	41	53	53	61	68	76	82	85	104	104	116
130	69.5	102	0.500	32	36	40	43	50	56	59	60	67	68	75
130	61.4	102	0.625	31	36	40	44	50	56	59	60	68	68	74
130	53.3	102	0.750	32	36	40	44	50	56	59	63	67	71	75
130	45.1	102	0.875	32	36	40	44	49	55	59	63	67	71	74
130	37.0	102	1.000	31	37	40	50	54	55	58	66	70	73	78
130	20.8	102	1.250	33	39	43	54	54	62	65	69	74	83	87
130	73.4	114	0.625	34	36	40	43	49	52	58	61	62	69	70
130	65.3	114	0.750	32	36	39	43	50	52	58	61	62	68	70
130	57.1	114	0.875	32	35	39	44	50	51	57	60	62	68	70
130	49.0	114	1.000	31	35	40	44	49	51	57	60	65	68	70
130	32.8	114	1.250	32	36	39	44	50	55	59	64	68	71	75
130	16.5	114	1.500	33	37	43	50	55	60	63	68	71	79	84
130	85.4	126	0.625	35	37	40	43	47	52	54	57	63	66	68
130	77.3	126	0.750	34	37	39	43	46	51	53	55	63	64	67
130	69.1	126	0.875	34	36	39	42	46	52	54	60	63	65	67
130	61.0	126	1.000	33	35	39	43	46	52	53	59	62	63	70
130	44.8	126	1.250	32	36	39	42	46	52	57	61	62	69	69
130	28.5	126	1.500	32	36	39	42	49	52	57	61	65	68	72
130	89.3	138	0.750	37	38	41	43	47	52	54	56	61	66	67
130	81.1	138	0.875	36	38	40	42	46	52	53	55	60	65	66
130	73.0	138	1.000	36	37	40	43	47	52	54	57	58	65	65
130	56.8	138	1.250	34	36	39	42	46	50	53	56	63	64	65
130	40.5	138	1.500	33	34	40	43	46	51	54	59	64	64	71
130	8.0	138	2.000	33	38	43	48	57	58	61	66	73	77	80
130	101.3	150	0.750	40	43	44	46	49	55	55	58	61	66	71
130	93.1	150	0.875	40	41	44	45	50	53	55	57	62	65	69
130	85.0	150	1.000	38	41	42	45	47	55	55	56	58	63	69
130	68.8	150	1.250	37	39	41	43	47	52	54	57	60	66	67
130	52.5	150	1.500	35	38	40	43	46	51	53	55	60	65	67
130	20.0	150	2.000	34	36	39	43	47	52	55	60	63	64	70
130	113.3	162	0.750	44	47	48	49	51	55	60	61	64	69	70
130	105.1	162	0.875	42	45	47	48	50	53	58	59	62	66	69
130	97.0	162	1.000	43	43	46	47	50	54	56	59	61	65	67
130	80.8	162	1.250	40	42	44	45	48	51	55	56	60	62	67
130	64.5	162	1.500	38	40	41	44	48	53	54	56	59	63	67
130	32.0	162	2.000	36	37	40	43	48	53	55	57	62	65	67
130	125.3	174	0.750	48	49	49	51	54	57	63	64	66	71	72
130	117.1	174	0.875	45	49	49	49	53	58	60	63	64	68	70
130	109.0	174	1.000	44	47	48	50	52	57	60	61	63	67	69
130	92.8	174	1.250	42	45	45	48	51	56	57	60	61	64	69
130	76.5	174	1.500	42	43	46	47	50	53	58	58	61	64	68
130	44.0	174	2.000	38	40	42	44	48	53	55	55	60	62	68

**X - Bridging Requirements - Reference SP-Series Specification Section 904.5 BRIDGING on page 92**

1 row	2 rows	3 rows	4 rows	5 rows	6 rows	7 rows	8 rows	9 rows	10 rows
-------	--------	--------	--------	--------	--------	--------	--------	--------	---------

**Bearing Seat Depth - Profiles to the right of a colored line have a seat depth as indicated in the chart below**

Minimum 5"	7½"	10"	Maximum 12½"
------------	-----	-----	--------------

# GABLE JOIST (SPGB) TABLES

Span ft	End Depth in	Center Depth in	Top Chord Pitch in/ft	Top Chord Uniform Load - Pounds per Linear Foot (plf) (ASD)										
				300	350	400	450	500	550	600	650	700	750	800
				Joist Self-Weight - Pounds per Linear Foot (plf)										
140	52.5	70	0.250	48	52	59	67	74	79	94	101	101	114	123
140	43.8	70	0.375	47	51	59	67	74	79	93	101	101	113	123
140	35.0	70	0.500	51	52	59	66	74	85	94	101	113	123	123
140	26.3	70	0.625	51	55	63	71	80	85	102	102	125	125	126
140	17.5	70	0.750	52	59	67	75	85	103	103	126	127	127	150
140	8.8	70	0.875	59	67	81	85	102	115	126	127	148	148	172
140	55.8	82	0.375	39	48	53	57	62	69	76	81	86	93	102
140	47.0	82	0.500	38	48	53	57	64	69	76	81	86	101	101
140	38.3	82	0.625	41	52	53	60	65	72	79	84	95	102	102
140	29.5	82	0.750	41	52	56	61	68	75	81	85	102	102	116
140	20.8	82	0.875	47	53	60	67	72	81	85	103	103	116	126
140	12.0	82	1.000	52	57	64	72	82	86	104	119	126	126	128
140	67.8	94	0.375	36	41	50	54	59	63	66	74	78	83	88
140	59.0	94	0.500	37	41	49	54	58	63	66	73	78	83	88
140	50.3	94	0.625	37	42	49	54	58	63	69	73	80	85	95
140	41.5	94	0.750	37	42	53	54	62	65	70	77	82	86	95
140	32.8	94	0.875	38	44	53	54	61	68	73	77	87	94	103
140	24.0	94	1.000	39	48	52	62	65	69	76	81	86	104	104
140	71.0	106	0.500	35	40	44	51	56	60	64	68	75	76	83
140	62.3	106	0.625	36	40	44	50	56	60	64	67	74	76	83
140	53.5	106	0.750	35	40	44	50	56	60	64	67	75	79	84
140	44.8	106	0.875	35	40	44	54	55	60	66	70	74	79	83
140	36.0	106	1.000	35	40	49	54	58	62	67	71	78	82	88
140	18.5	106	1.250	40	44	54	58	62	69	74	83	87	98	105
140	74.3	118	0.625	35	40	43	51	53	59	62	63	70	73	78
140	65.5	118	0.750	35	39	43	50	52	58	62	66	70	72	78
140	56.8	118	0.875	35	39	43	50	52	58	61	68	69	75	77
140	48.0	118	1.000	35	40	44	50	56	57	61	67	69	75	77
140	30.5	118	1.250	35	40	44	51	56	59	64	68	76	78	84
140	13.0	118	1.500	38	43	55	55	63	67	71	78	83	89	105
140	86.3	130	0.625	37	41	44	47	53	55	62	65	67	73	76
140	77.5	130	0.750	37	39	43	47	53	55	61	64	66	72	76
140	68.8	130	0.875	36	39	43	47	52	54	61	64	66	72	76
140	60.0	130	1.000	35	39	43	47	52	54	62	63	70	72	74
140	42.5	130	1.250	34	39	42	47	53	58	62	62	69	71	77
140	25.0	130	1.500	35	40	44	51	57	61	64	68	73	75	80
140	98.3	142	0.625	40	42	45	48	54	56	59	66	68	72	73
140	89.5	142	0.750	39	41	43	47	53	56	58	65	67	71	75
140	80.8	142	0.875	38	40	43	48	53	55	57	65	66	70	74
140	72.0	142	1.000	37	39	43	47	52	55	57	64	66	69	74
140	54.5	142	1.250	36	39	42	46	53	55	60	64	65	72	73
140	37.0	142	1.500	35	39	43	47	51	54	63	63	70	71	78
140	101.5	154	0.750	43	44	46	49	57	57	60	64	67	73	75
140	92.8	154	0.875	41	42	45	49	54	56	58	64	69	72	73
140	84.0	154	1.000	40	42	45	48	54	55	58	63	68	72	73
140	66.5	154	1.250	39	40	43	47	52	55	58	62	67	70	71
140	49.0	154	1.500	37	39	43	46	52	54	57	65	66	69	74
140	14.0	154	2.000	36	41	45	48	54	59	62	67	71	76	80
140	113.5	166	0.750	46	48	49	51	57	59	62	66	70	71	77
140	104.8	166	0.875	45	46	48	51	55	57	60	63	68	70	76
140	96.0	166	1.000	43	46	48	50	55	58	59	65	67	75	76
140	78.5	166	1.250	42	44	45	48	53	56	58	60	65	71	74
140	61.0	166	1.500	40	42	44	48	55	55	58	61	68	70	72
140	26.0	166	2.000	37	41	44	47	54	56	62	65	67	73	75
140	125.5	178	0.750	50	52	55	56	61	65	66	71	73	77	80
140	116.8	178	0.875	48	50	52	54	57	62	65	66	72	72	79
140	108.0	178	1.000	46	49	50	52	59	61	63	68	70	71	78
140	90.5	178	1.250	44	46	50	51	57	59	60	65	66	72	76
140	73.0	178	1.500	43	45	47	50	54	57	60	63	67	69	74
140	38.0	178	2.000	39	42	44	48	54	55	58	63	68	71	73

**X - Bridging Requirements** - Reference SP-Series Specification **Section 904.5 BRIDGING** on page 92

1 row	2 rows	3 rows	4 rows	5 rows	6 rows	7 rows	8 rows	9 rows	10 rows
-------	--------	--------	--------	--------	--------	--------	--------	--------	---------

**Bearing Seat Depth** - Profiles to the right of a colored line have a seat depth as indicated in the chart below

Minimum 5"	7½"	10"	Maximum 12½"
------------	-----	-----	--------------

# GABLE JOIST (SPGB) TABLES

Span ft	End Depth in	Center Depth in	Top Chord Pitch in/ft	Top Chord Uniform Load - Pounds per Linear Foot (plf) (ASD)										
				300	350	400	450	500	550	600	650	700	750	800
				Joist Self-Weight - Pounds per Linear Foot (plf)										
150	57.3	76	0.250	48	56	61	68	75	84	93	101	115	123	124
150	47.9	76	0.375	51	56	60	68	76	84	93	102	113	123	123
150	38.5	76	0.500	51	56	63	70	80	84	100	101	123	123	126
150	29.1	76	0.625	52	59	67	76	85	94	102	115	125	126	136
150	19.8	76	0.750	56	64	71	80	96	103	116	127	127	139	149
150	10.4	76	0.875	59	71	85	96	103	125	125	125	150	150	172
150	57.9	86	0.375	42	53	57	62	70	77	81	85	102	103	114
150	48.5	86	0.500	42	53	57	65	69	77	84	95	103	103	114
150	39.1	86	0.625	47	53	60	64	73	81	86	102	103	115	125
150	29.8	86	0.750	47	53	61	68	75	86	95	103	116	127	127
150	20.4	86	0.875	52	56	64	72	82	85	104	115	127	127	127
150	11.0	86	1.000	56	64	72	81	97	104	117	126	127	142	150
150	67.9	96	0.375	40	50	55	58	63	70	74	82	87	95	103
150	58.5	96	0.500	40	49	55	58	65	70	73	82	87	95	104
150	49.1	96	0.625	39	49	54	58	66	70	77	81	87	102	103
150	39.8	96	0.750	42	53	54	61	65	72	82	86	95	103	104
150	30.4	96	0.875	41	54	56	61	69	77	82	87	103	103	114
150	21.0	96	1.000	48	53	61	69	73	83	87	103	103	117	128
150	68.5	106	0.500	40	45	51	56	60	67	72	75	83	84	97
150	59.1	106	0.625	39	44	51	56	59	66	71	74	83	88	96
150	49.8	106	0.750	39	44	55	56	63	66	74	78	83	87	97
150	40.4	106	0.875	40	49	55	58	63	66	73	83	87	96	104
150	31.0	106	1.000	39	50	54	58	66	70	78	83	87	104	104
150	12.3	106	1.250	49	53	61	69	77	82	87	104	104	118	127
150	78.5	116	0.500	39	43	50	53	58	62	69	70	77	82	86
150	69.1	116	0.625	38	42	50	57	60	61	69	73	77	84	86
150	59.8	116	0.750	38	42	50	57	61	64	68	74	76	85	85
150	50.4	116	0.875	38	43	50	56	60	64	68	74	79	84	89
150	41.0	116	1.000	38	44	50	55	60	65	71	75	84	88	97
150	22.3	116	1.250	40	50	55	59	63	70	75	84	88	99	105
150	79.1	126	0.625	38	44	47	52	59	63	64	72	74	79	84
150	69.8	126	0.750	38	43	47	53	59	63	64	71	74	79	86
150	60.4	126	0.875	39	42	47	52	58	62	67	70	76	78	85
150	51.0	126	1.000	39	42	47	52	58	62	68	70	76	81	85
150	32.3	126	1.250	39	43	51	56	59	65	68	75	80	83	89
150	13.5	126	1.500	40	51	56	59	68	71	79	84	90	106	107
150	89.1	136	0.625	40	44	48	52	56	64	65	69	73	77	82
150	79.8	136	0.750	39	43	47	53	55	63	65	68	73	76	82
150	70.4	136	0.875	39	42	47	53	55	63	65	70	73	75	80
150	61.0	136	1.000	39	42	47	53	55	62	64	71	73	79	80
150	42.3	136	1.250	38	42	47	53	58	62	67	70	77	78	86
150	23.5	136	1.500	38	43	51	57	61	65	69	77	80	86	91
150	99.1	146	0.625	40	45	48	56	57	60	67	69	72	79	80
150	89.8	146	0.750	41	43	47	54	56	58	66	69	71	78	79
150	80.4	146	0.875	40	43	47	53	55	59	65	67	70	78	78
150	71.0	146	1.000	39	43	47	53	54	58	64	67	73	77	80
150	52.3	146	1.250	38	42	46	53	55	61	64	67	72	77	79
150	33.5	146	1.500	37	43	46	54	59	63	63	70	75	79	83
150	109.1	156	0.625	44	47	50	55	58	61	66	70	74	75	81
150	99.8	156	0.750	43	45	50	53	57	60	65	71	73	75	81
150	90.4	156	0.875	41	45	48	55	56	59	64	69	73	76	81
150	81.0	156	1.000	41	44	47	53	56	59	68	68	71	77	80
150	62.3	156	1.250	40	43	46	53	56	58	65	67	70	78	78
150	43.5	156	1.500	38	43	46	52	56	62	65	66	73	75	80
150	109.8	166	0.750	44	47	50	57	59	61	67	69	75	79	79
150	100.4	166	0.875	44	47	49	54	58	61	66	71	75	76	79
150	91.0	166	1.000	43	46	48	52	58	60	66	71	74	75	81
150	72.3	166	1.250	42	44	48	54	56	59	63	69	73	74	80
150	53.5	166	1.500	40	43	47	51	56	59	66	67	71	75	79
150	16.0	166	2.000	40	44	47	55	62	65	69	73	76	81	85

**X - Bridging Requirements** - Reference SP-Series Specification **Section 904.5 BRIDGING** on page 92

1 row	2 rows	3 rows	4 rows	5 rows	6 rows	7 rows	8 rows	9 rows	10 rows
-------	--------	--------	--------	--------	--------	--------	--------	--------	---------

**Bearing Seat Depth** - Profiles to the right of a colored line have a seat depth as indicated in the chart below

Minimum 5"	7½"	10"	Maximum 12½"
------------	-----	-----	--------------